

**2024 SS**

2024 SPRING & SUMMER COLLECTION



URBAN OUTDOOR  
FOOTWEAR

**PRODUCT BOOK**

In addition to the fusion of fashion and outdoor style,  
SHAKA supports your feet for long walks  
such as travel scenes.

Make connections  
with unknown lands and people.  
Hoping that  
SHAKA could be a part of your trip.

**SHAKA**

2024  
SPRING & SUMMER



We can get any information we want from our phone.  
There's no where we don't know in this world anymore.

So let's go.

And step into the world where places that only exists at the time.

We can go anywhere wearing this freedom.

To see it with our own eyes, hear it with our own ears,  
and to feel the air and scent.

There will be lots of unexpected things ahead,  
beyond our expectation waiting for us.

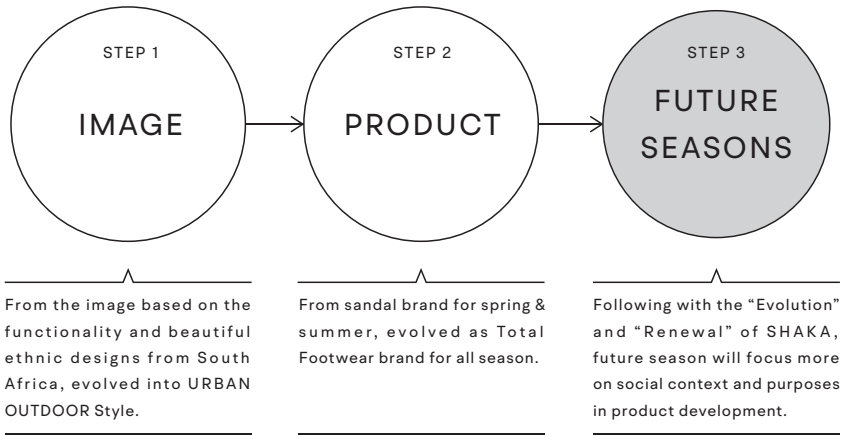


URBAN OUTDOOR  
FOOTWEAR

行こう。自由だ。

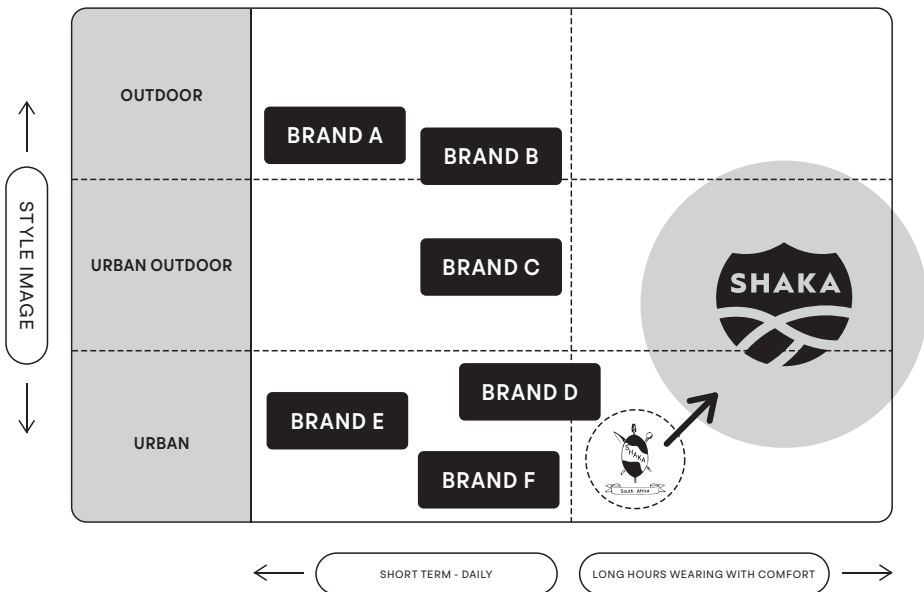
Let's go.  
Anywhere, anytime.

## SHAKA's EVOLUTIONS & GOALS



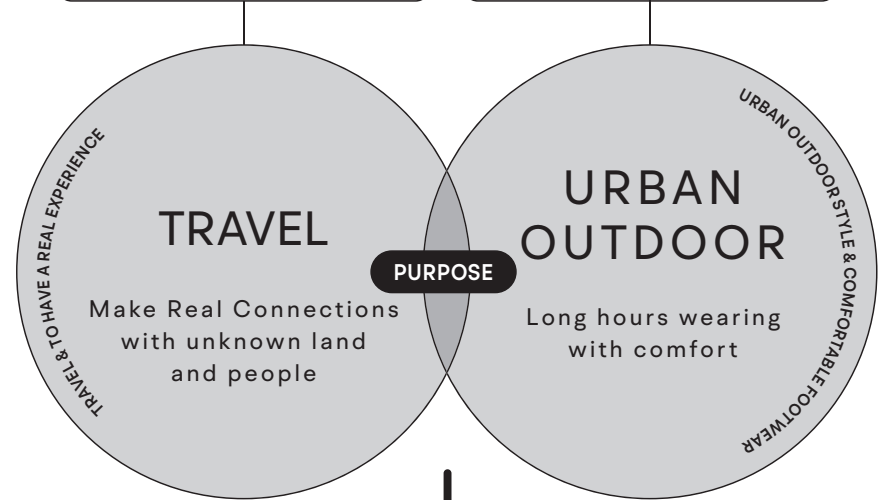
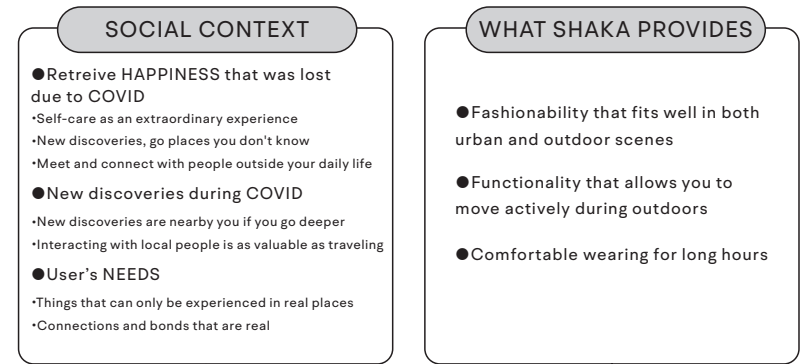
ABOUT SHAKA

[ URBAN OUTDOOR ] + [ LONG HOURS WEARING WITH COMFORT ]  
= ONE AND ONLY EXISTENCE



004

## WHAT'S SHAKA AIMING FOR?



ABOUT SHAKA

We believe that by walking around in real life, exploring new things and new connections will bring ease and fullness into life. So we promise you a perfect style to go anywhere you want and a pair to walk you everywhere.

# SHAKA

005



# ITEM POSITIONING MAP

[ STYLE ]

OUTDOOR  
URBAN OUTDOOR  
URBAN

ITEM POSITIONING MAP

ITEM POSITIONING MAP

category

**DAILY-OUTDOOR**



→ page.050

category

**EXTRA-OUTDOOR**



→ page.022

category

**EXTRA-SPECIAL URBAN OUTDOOR**



→ page.008

category

**DAILY-URBAN OUTDOOR**



→ page.036

category

**DAILY-URBAN**



→ page.058

category

**EXTRA-URBAN OUTDOOR**



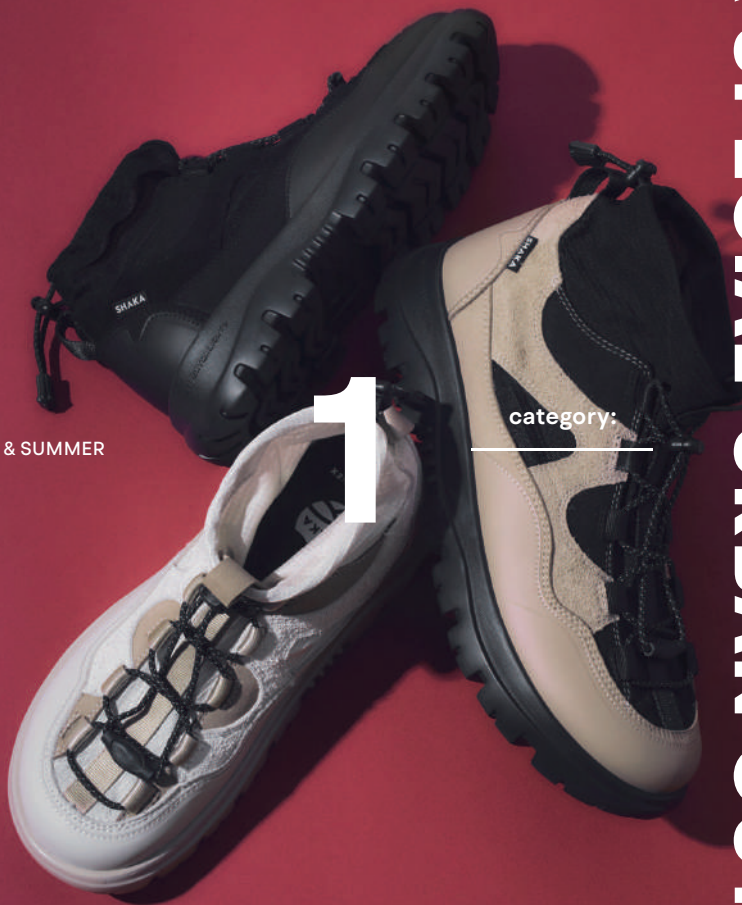
→ page.012

LONG HOURS WEARING WITH COMFORT

**ONE MILE** (SHORT-TIME WEARING)      **DAILY** (DAILY-USE)      **EXTRA** (NON-DAILY, TRAVELS)

[ WEARING DISTANCE ( TIME ) ]

SHAKA  
2024 SPRING & SUMMER  
COLLECTION



category:

# EXTRA SPECIAL-URBAN OUTDOOR

category: EXTRA SPECIAL-URBAN OUTDOOR

## ITEM LINE UP



no. SK-265

NEW STYLE

**HIKE PURSE EX**

▶ page. 010

NEW STYLE



EXTRA SPECIAL-URBAN OUTDOOR

010



BLACK 00M



LINEN/TAUPE 01M



TAUPE/BLACK 01M



SHAKA IN-FOAM EX

EXTRALIGHT®

- price
- size 4, 5, 6, 7, 8, 9, 10, 11, 12
- out sole EX SOLE
- material Upper: polyester, nylon, PU leather  
Outsole: EVA

Introducing HIKE PURSE EX, trekking inspired shoes from SHAKA's top-end EX series. The iconic purse-like drawstring opening and reflector shoelaces with cord locks, blends with the tech-like upper that mixes different materials such as microfiber and suede to accentuate the look. The insole uses SHAKA IN-FOAM EX, specially developed for EX sole shoes, has both shock absorption and resilience to achieve the ultimate in comfort.

EXTRA SPECIAL-URBAN OUTDOOR

011





SHAKA  
2024 SPRING & SUMMER  
COLLECTION

2

category:

# EXTRA-URBAN OUTDOOR

category: EXTRA-URBAN OUTDOOR

## ITEM LINE UP



no. SK-266

NEW STYLE

**COACHELLA EX**

▶ page. 014



no. SK-267

NEW STYLE

**ABSO CUSH SLIDE EX**

▶ page. 016



no. SK-238

**NEO BUNGY EX**

▶ page. 018



no. SK-239

**CHILL OUT EX**

▶ page. 020

NEW STYLE

EXTRA-URBAN OUTDOOR



BLACK 00P



LINEN/TAUPE 02P



BLACK/GREY 01P



- price
- size 4, 5, 6, 7, 8, 9, 10, 11, 12
- out sole EX SOLE
- material Upper: polyester, nylon  
Outsole: EVA

A new sandal from the EX series with a center zip design. Layered with sheer diamond ripstop on a neoprene material with a mesh surface that reminiscence a sneaker look. The combination of the great comfort EX sole that is perfect for long time wearing, and the neoprene upper with stretchability and breathability is also recommended for occasions like outdoor festivals.



NEW STYLE



EXTRA-URBAN OUTDOOR

016



BLACK 00E



TAUPE 00E



- price
- size 5, 6, 7, 8, 9, 10, 11
- out sole EX SOLE
- material Upper: EVA  
Outsole: EVA

A newly developed sandal made with an EVA injection molded integral upper and footbed. By making it a two-layer structure with the EX sole, the fitting is not too soft and has just the right amount of resilience. This pair guarantees your comfort from the moment you put your feet in. The upper has a strap that allows you to adjust the fit, and you can also wear it by turning the strap around the heel. We are proud to present this special pair that combines design and function.

EXTRA-URBAN OUTDOOR

017



- price
- size 4, 5, 6, 7, 8, 9, 10, 11, 12
- out sole EX SOLE
- material Upper: nylon  
Outsole: EVA

A classic sports sandal design that allows you to adjust the fitting on the upper and ankle in three places. NEO BUNGY EX, which is a combination of SHAKA's classic model with a lightweight EX sole, features a neoprene material on the back of the strap that comes with mesh details on the surface. In addition to great comfort with long time wearing, it has also been improved with quick-drying.



BLACK 00N BASIC



TAUPE 00N



GREY 00N NEW



- price
- size 4, 5, 6, 7, 8, 9, 10, 11, 12
- out sole EX SOLE
- material Upper: nylon  
Outsole: EVA

SHAKA's flagship model, which has a unique design with a neoprene upper. Equipped with a lightweight EX sole, CHILL OUT EX also features an updated neoprene upper surface with a highly breathable mesh material. The improved quick-drying material can be worn with no worries on the beach or any water surfaces. Can be worn 2WAY as a slide as well by removing the heel strap.





3

category:

EXTRA-OUTDOOR

SHAKA  
2024 SPRING & SUMMER  
COLLECTION

category: EXTRA-OUTDOOR

ITEM LINE UP



no. SK-268

NEW STYLE

**OTTER ZIP MOC AT**

▶ page. 024



no. SK-269

NEW STYLE

**TREK SLIDER PARA AT**

▶ page. 026



no. SK-217

**OTTER TRAIL AT**

▶ page. 028



no. SK-240

**TABLE MOUNTAIN AT**

▶ page. 030



no. SK-146

**NEO BUNGY AT**

▶ page. 032



no. SK-218

**NEO HIKER AT**

▶ page. 034

NEW STYLE

EXTRA-OUTDOOR



024

UNISEX ○ WOMEN'S ○ KID'S

EXTRA-OUTDOOR



BLACK 00U



LINEN/TAUPE 01U



GREY/LINEN 01U

**SHAKA IN-FOAM**

- price
- size 4, 5, 6, 7, 8, 9, 10, 11, 12
- out sole ALL-TERRAIN SOLE
- material Upper: polyurethane, PU leather  
Outsole: EVA+rubber

A sneaker version of OTTER TRAIL AT with an upper made of paper PU, and a mix of different materials such as microfiber, suede, and stretch mesh, finished with a zip closure and reflector cord. With the zipper closure, it enhances the fitting of moc shoes that are easy to put on. Featuring AT sole with cushioning and grip power for an urban outdoor look that is a typical SHAKA style.

025



NEW STYLE

EXTRA-OUTDOOR



026

● UNISEX ○ WOMEN'S ○ KID'S

EXTRA-OUTDOOR



BLACK 00U



LINEN/TAUPE 01U



GREY/LINEN 01U

**SHAKA IN-FOAM**

- price
- size 4, 5, 6, 7, 8, 9, 10, 11, 12
- out sole ALL-TERRAIN SOLE
- material Upper: polyurethane, PU leather  
Outsole: EVA+rubber

Tech-like clog sandals with a TPU mudguard on a paper-like PU and neoprene upper. Covered-toe mules are emerging as a trend in the outdoor market and it's a must have for this season. The insole is equipped with SHAKA IN-FOAM, which has excellent cushioning, antibacterial and deodorizing effects, and an all-terrain AT sole that can be used on rough roads.

027



BLACK 00N BASIC



LINEN/TAUPE 01N



TAUPE/BLACK 01N NEW



BROWN/DENIM 01N NEW



LINEN 00N NEW

**SHAKA IN-FOAM**

- price
- size 4, 5, 6, 7, 8, 9, 10, 11, 12
- out sole ALL-TERRAIN SOLE
- material Upper: nylon, PU leather  
Outsole: EVA+rubber

OTTER TRAIL AT features a mesh with TPU mudguard upper and an iconic Z strap. With the new category of sneaker sandals growing, this style was one of the most popular styles for 2023SS. This season, in addition to black and linen x taupe, new colors such as brown x denim, taupe x black and linen are available. These new combination colors are perfect not only for outdoors but also on the streets.

EXTRA-OUTDOOR



BLACK 00N BASIC



LINEN/TAUPE 01N



TAUPE/BLACK 01N NEW



BROWN/DENIM 01N NEW

EXTRA-OUTDOOR

**SHAKA IN-FOAM**

- price
- size 4, 5, 6, 7, 8, 9, 10, 11, 12
- out sole ALL-TERRAIN SOLE
- material Upper: PU leather, nylon  
Outsole: EVA+rubber

Another style from the sneaker sandal category, TABLE MOUNTAIN AT. This model is derived from the name of a place in Cape Town, South Africa and inspired by trekking. It features a hybrid style that incorporates cords into PU leather and mesh materials. The heel strap is removable as well and can be worn as a slide sandal. Available in 4 new colors including brown x denim and taupe x black.



EXTRA-OUTDOOR



BLACK 00N



ARMY 00N



TAUPE 00N



DENIM 00N

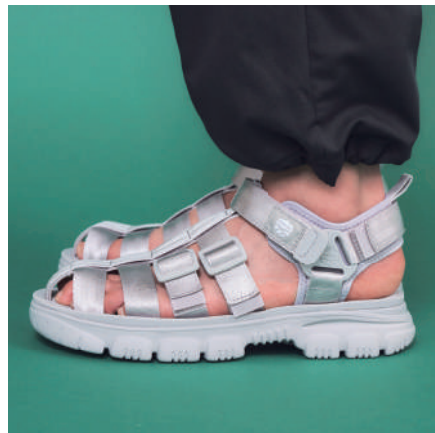


GREY 00N NEW

EXTRA-OUTDOOR

- price
- size 4, 5, 6, 7, 8, 9, 10, 11, 12
- out sole ALL-TERRAIN SOLE
- material Upper: nylon  
Outsole: EVA+rubber

NEO BUNGY AT equipped with the comfortable AT sole and 3 straps that can be adjusted for perfect fitting. All straps are lined with neoprene for extra comfort. Color comes with one tone for a minimal and fashionable look. This season, grey was added to the collection, all 5 colors are available.



BLACK 00N



TAUPE 00N



ARMY 00N NEW



GREY 00N NEW



- price
- size 4, 5, 6, 7, 8, 9, 10, 11, 12
- out sole ALL-TERRAIN SOLE
- material Upper: nylon  
Outsole: EVA+rubber

NEO HIKER AT, the gurkha style sandal and the icon model of SHAKA. Featuring seat belt type nylon belt and neoprene around the ankle. A shoe-like pair with a design that wraps around your feet, equipped with an all-terrain AT sole that has high grip power and great for any surface. New color grey with an urban look is added.





SHAKA  
2024 SPRING & SUMMER  
COLLECTION

4

category:

DAILY-URBAN OUTDOOR

category: DAILY-URBAN OUTDOOR

ITEM LINE UP



no. SK-185

**CHILL OUT SF**

▶ page. 038



no. SK-241

**ZAMPER SF**

▶ page. 040



no. SK-271

NEW STYLE

**CAMP BAY PARA BF**

▶ page. 042



no. SK-272

NEW STYLE

**RANGER PARA BF**

▶ page. 044



no. SK-276

NEW STYLE

**HIKER COMFY**

▶ page. 046



no. SK-277

NEW STYLE

**CHILL OUT COMFY**

▶ page. 048



BLACK 00N



ARMY 00N



TAUPE 00N



GREY 00N NEW



- price
- size 4, 5, 6, 7, 8, 9, 10, 11, 12
- out sole SAFARI SOLE
- material Upper: nylon  
Outsole: EVA+rubber

With its iconic Butterfly-shaped neoprene upper, CHILL OUT SF features cordura nylon fabric on the upper, a seat belt style nylon strap, and a block pattern SF sole. The heel strap on this style can be removed and worn as a slide sandal. Grey is a new color added for this season. Combining colors in 2 different tones gives it a fashionable look.





BLACK 00N

TAUPE 00N

LINEN 00N

ARMY 00N NEW

- price
- size 4, 5, 6, 7, 8, 9, 10, 11, 12
- out sole SAFARI SOLE
- material Upper: nylon  
Outsole: EVA+rubber

ZAMPER SF, with a Z pattern strap is a combination of the classic design of outdoor sandals and the SF sole inspired by the command sole. With its military inspired details, this season Army has been added as a new color. The name ZAMPER is inspired by a mix of camper and Z strap. Perfect to wear for both camping or in the city.

NEW STYLE

DAILY-URBAN OUTDOOR



BLACK 00N



TAUPE 00N



LINEN 00N

- price
- size 4, 5, 6, 7, 8, 9, 10, 11, 12
- out sole BAREFEET SOLE
- material Upper: nylon  
Outsole: rubber

An evolution version of the original CAMP BAY BF. This style is a combination of beach sandals, Japanese-style thongs, and outdoor-style straps on the upper for adjustment. An arch-shaped EVA footbed is added to the BF sole, creating a two-layer structure that improves comfortness and a luxurious look as a high-end fashion sandal.

NEW STYLE



DAILY-URBAN OUTDOOR



BLACK 00N



TAUPE 00N



LINEN 00N

- price
- size 4, 5, 6, 7, 8
- out sole BAREFEET SOLE
- material Upper: nylon  
Outsole: rubber

RANGER has a neoprene upper that wraps the entire foot and allows you to adjust the fit with nylon tape. A classic model has been upgraded to an excellent two-layer structure of arch-shaped EVA footbed and BF sole for great comfort. Comes with 3 classic colors, black, linen and taupe with a luxurious look, easy to match with any style or outfit.



NEW STYLE

DAILY-URBAN OUTDOOR



046

DAILY-URBAN OUTDOOR



BLACK 00E



TAUPE 00E

047

- price
- size 5, 6, 7, 8, 9, 10, 11
- out sole EVA COMFY SOLE
- material Upper: EVA  
Outsole: EVA

SHAKA's iconic Gurkha model in EVA injection version based on HIKER. The soft and comfortable EVA material covers your feet, and it has adjustable straps as well for great fitting. Equipped with a new sole pattern developed for the COMFY model. It combines great cushioning and resilience, great for long time wearing without feeling tired.

NEW STYLE

DAILY-URBAN OUTDOOR



048

DAILY-URBAN OUTDOOR



BLACK 00E



TAUPE 00E

- price
- size 5, 6, 7, 8, 9, 10, 11
- out sole EVA COMFY SOLE
- material Upper: EVA  
Outsole: EVA

This season's new style, COMFY in SHAKA's popular CHILL OUT design. The fit can be adjusted in 3 parts, and the heel strap can be removed and worn as a slide as well, continuing the functions of the original model. The newly developed COMFY sole with a shark sole pattern has excellent grip and is great for any occasions.

049



SHAKA  
2024 SPRING & SUMMER  
COLLECTION

5

category: \_\_\_\_\_

DAILY-OUTDOOR

category: DAILY-OUTDOOR

ITEM LINE UP



no. SK-101

**HIKER**

▶ page. 052



no. SK-104

**NEO BUNGY**

▶ page. 054



no. SK-240

**CHILL OUT**

▶ page. 056





BLACK 00R BASIC



ARMY 00R



TAUPE 00R



BROWN 01R NEW

Recycled PET



- price
- size 4, 5, 6, 7, 8, 9, 10, 11, 12
- out sole ORIGINAL SOLE
- material Upper: polyester (recycle PET)  
Outsole: rubber

SHAKA's iconic and signature model - HIKER. This Gurkha-type sandal is a timeless piece, and the details that embrace its roots in outdoor and leisure. Since last season, recycled polyester has been used for the strap, and it has been updated to have a natural cotton-like texture. New color brown is added to the collection with a classic twist. This shoe-like model is also perfect for dress style.



BLACK 00R BASIC



ARMY 00R



TAUPE 00R



DENIM 00R



GREY 00R NEW



SMOKE PURPLE 00R NEW

Recycled PET



- price
- size 4, 5, 6, 7, 8, 9, 10, 11, 12
- out sole ORIGINAL SOLE
- material Upper: polyester (recycle PET)  
Outsole: rubber

NEO BUNGY is a classic SHAKA style and bestseller. This season, smoke purple and grey are added as new colors, for a more fashionable look. The 3-point adjustable strap has neoprene on the back for great comfort and fitting. The sole is equipped with SHAKA ORIGINAL SOLE featuring a toe bumper design. Since last season, the webbing tape has been updated with recycled material.



BLACK 00R BASIC



TAUPE 00R



LINEN 00R



DENIM 00R



GREY 00R NEW



BROWN 01R NEW

Recycled PET



- price
- size 4, 5, 6, 7, 8, 9, 10, 11, 12
- out sole ORIGINAL SOLE
- material Upper: polyester (recycle PET)  
Outsole: rubber

One of SHAKA's timeless classic styles, CHILL OUT features a butterfly-shaped upper made of neoprene with adjustable straps as functional slide sandals that fit all types of foot. Recycled polyester is used on the webbing tape for all colors, and comes with 2 new colors, brown and grey.





SHAKA  
2024 SPRING & SUMMER  
COLLECTION

6

category:

# DAILY-URBAN

category: DAILY-URBAN



no. SK-274

NEW STYLE

**WEEKENDER TASSEL**

▶ page. 060



no. SK-278

NEW STYLE

**NEO FIESTA PLATFORM**

▶ page. 066



no. SK-175

**FIESTA COWHAIR**

▶ page. 072



no. SK-105

**NEO BUNGY PLATFORM**

▶ page. 078



no. SK-281

NEW STYLE

**VACAY CHUNKY**

▶ page. 084



no. SK-282

NEW STYLE

**NEO CLIMBING HIKE PLATFORM**

▶ page. 090



no. SK-221

**WEEKENDER KILT**

▶ page. 062



no. SK-118

**RIVER GUIDE**

▶ page. 068



no. SK-250

**X-PACKER PLATFORM COWHAIR**

▶ page. 074



no. SK-279

NEW STYLE

**NEO FREEFALL PARA PLATFORM**

▶ page. 080



no. SK-114

**NEO BUNGY CHUNKY**

▶ page. 086



no. SK-283

NEW STYLE

**CROSS HIKE PLATFORM**

▶ page. 092

## ITEM LINE UP



no. SK-275

NEW STYLE

**NEO FIESTA**

▶ page. 064



no. SK-153

**X-PACKER COWHAIR**

▶ page. 070



no. SK-270

NEW STYLE

**SABRINA AT**

▶ page. 076



no. SK-280

NEW STYLE

**RANGER PLATFORM**

▶ page. 082



no. SK-247

**NEO RALLY SLIDE CHUNKY**

▶ page. 088



NEW STYLE

DAILY-URBAN



060

DAILY-URBAN



BLACK 00R



TAUPE 00R



GREY 00R



BROWN 01R



Recycled PET



- price
- size 4, 5, 6, 7, 8, 9, 10, 11, 12
- out sole ORIGINAL SOLE
- material Upper: polyester (recycle PET), microfiber  
Outsole: rubber

WEEKENDER TASSEL features a fancy removable tassel made of microfiber suede. Same as WEEKENDER KILT, the back strap is also removable and can be worn in 4 ways. With its loafers-like details, this pair is also perfect to match with jacket style for a fresh look. Comes in 4 basic colors and is easy to style.

061



BLACK 00R



TAUPE 00R



GREY 00R NEW



BROWN 01R NEW

Recycled PET



- price
- size 4, 5, 6, 7, 8, 9, 10, 11, 12
- out sole ORIGINAL SOLE
- material Upper: polyester (recycle PET), PU leather  
Outsole: rubber

WEEKENDER KILT comes with a removable kilt and back strap, and can be worn in 4 ways in 4 different looks. By removing the kilt, it could turn into a simple outdoor sandal, and without the back strap, it could be worn as a slide sandal as well. This season, grey and brown are added to the collection. Very useful pair of sandals and fit most occasions or any outfit.



NEW STYLE



BLACK 00R



BROWN/AQUA 01R



SMOKE PURPLE/MAGENTA 01R



MOSS GREEN/LINEN 01R

DAILY-URBAN

DAILY-URBAN

UNISEX ● WOMEN'S ○ KID'S



Recycled PET



- price
- size 4, 5, 6, 7, 8
- out sole ORIGINAL SOLE
- material Upper: polyester (recycle PET)  
Outsole: rubber

An evolution of the classic FIESTA with its iconic cross design. Neoprene has been applied on the back of the wide webbing tape for better comfort and fitting also has been greatly improved. This season NEO FIESTA comes with a colorful color combination with a fashionable twist. The heel strap can be removed and worn as a slide as well.

NEW STYLE



BLACK 00R



TAUPE 00R



BROWN 00R



SMOKE PURPLE 00R



PEACH PINK 00R

DAILY-URBAN

DAILY-URBAN



Recycled PET



- price
- size 4, 5, 6, 7, 8
- out sole ORIGINAL SOLE
- material Upper: polyester (recycle PET)  
Outsole: rubber

An evolution of the classic FIESTA PLATFORM with its iconic wide cross design. Neoprene has been applied on the back of the wide webbing tape for better comfort and fitting also has been greatly improved. NEO FIESTA PLATFORM comes in tone on tone colors for a simple but chic look. New colors like smoke purple and peach pink have been added to the collection.



DAILY-URBAN



BLACK 00N



TAUPE 00N



MOSS GREEN 00N NEW



AQUA/DARK BROWN 01N NEW



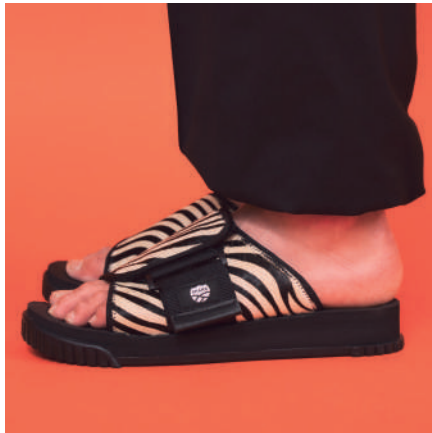
MAGENTA/DARK BROWN 01N NEW

DAILY-URBAN

- price
- size 4, 5, 6, 7, 8
- out sole ORIGINAL SOLE
- material Upper: nylon  
Outsole: rubber

RIVER GUIDE is popular for its feminine looks that features a glossy and delicate nylon tape. Outdoor elements are combined by adapting the SHAKA ORIGINAL SOLE for functionality. This season, aqua x dark brown, magenta x dark brown, and moss green are added for a fashionable urban outdoor look.





LEOPARD 01C



ZEBRA 01C



HOLSTEIN 01C



THOROUGHbred 01C NEW

Recycled PET



- price
- size 4, 5, 6, 7, 8, 9, 10, 11, 12
- out sole ORIGINAL SOLE
- material Upper: cowhair  
Outsole: rubber

A classic wide upper slide sandal that features genuine leather COWHAIR. Neoprene is used underneath the upper for extra comfort. Animal patterns such as leopard, zebra, holstein add accent to any outfit. This season, a luxurious brown x dark brown color thoroughbred has been added to the collection.



LEOPARD 01C



ZEBRA 01C



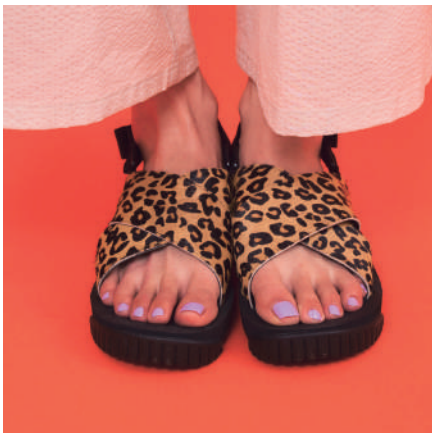
HOLSTEIN 01C



THOROUGHBRED 01C NEW

DAILY-URBAN

DAILY-URBAN



Recycled PET



- price
- size 4, 5, 6, 7, 8
- out sole ORIGINAL SOLE
- material Upper: cowhair  
Outsole: rubber

Popular style FIESTA comes in genuine leather COWHAIR. This pair has a sporty and luxurious look and can be paired with many styles. The back strap is removable and can be worn 2 ways as well as a slide sandal. In addition to the continued animal patterns of leopard, zebra, and holstein, a new color brown x dark brown thoroughbred has been added to the collection.



LEOPARD 01C



ZEBRA 01C



HOLSTEIN 01C



THOROUGHBRED 01C NEW



Recycled PET



- price
- size 4, 5, 6, 7, 8
- out sole ORIGINAL SOLE
- material Upper: cowhair  
Outsole: rubber

A classic wide upper slide sandal in PLATFORM sole that features genuine leather COWHAIR. Neoprene is used underneath the upper for extra comfort. Animal patterns such as leopard, zebra, holstein add accent to any outfit. This season, a luxurious brown x dark brown color thoroughbred has been added to the collection.



NEW STYLE



EXTRA-OUTDOOR



BLACK 00P



LINEN/TAUPE 02P



GREY 00P

EXTRA-OUTDOOR



**SHAKA IN-FOAM**

- price
- size 4, 5, 6, 7, 8
- out sole ALL-TERRAIN SOLE
- material Upper: polyester  
Outsole: EVA+rubber

Inspired by ballet shoes, SABRINA AT uses satin on the upper with nylon tape to give it a feminine look, and the AT sole fuses outdoor elements. The thin and glossy nylon tape with a metallic buckle enhances fashionability to the style. Comes in 3 colorways of black, grey, and linen x taupe.



BLACK 00R



LINEN 00R



TAUPE 00R



SMOKE PURPLE 00R NEW



PEACH PINK 00R NEW



MOSS GREEN 00R NEW



Recycled PET



- price
- size 4, 5, 6, 7, 8
- out sole ORIGINAL SOLE
- material Upper: polyester (recycle PET)  
Outsole: rubber

NEO BUNGY PLATFORM is a platform sole version based on SHAKA's iconic style and best seller NEO BUNGY. One of the popular styles that has both outdoor and feminine look. This season, new colors such as smoke purple, peach pink, and moss green have been added to the collection.

NEW STYLE



BLACK 00R



TAUPE/BLACK 01R



SMOKE PURPLE/BLACK 01R

DAILY-URBAN

DAILY-URBAN

UNISEX ● WOMEN'S ○ KID'S



Recycled PET



- price
- size 4, 5, 6, 7, 8
- out sole ORIGINAL SOLE
- material Upper: polyester (recycle PET)  
Outsole: rubber

NEO FREEFALL is a revival model that was previously developed with CHUNKY sole, now comes with PLATFORM sole for an updated look. The way the belt is fastened has been updated to make it easier to put on and take off, and the look has evolved to a simple but still keeps most of its original details. In addition to the classic black, taupe and smoke purple are combined with black soles, comes in 3 colorways.



NEW STYLE



DAILY-URBAN



082



BLACK 00R



LINEN/TAUPE 03R



MOSS GREEN/LINEN 03R

DAILY-URBAN

Recycled PET



- price
- size 4, 5, 6, 7, 8
- out sole ORIGINAL SOLE
- material Upper: polyester (recycle PET)  
Outsole: rubber

RANGER, which was originally developed for men previously, has been revived as a women's model this season in platform sole. Features a neoprene upper that wraps around your feet for extra comfort, and the functional design allows you to adjust the fit with nylon tape. Comes in 3 colors with different color outsole to accentuate the look.

083

NEW STYLE



BLACK 00R



LINEN/BLACK 01U



BROWN/BLACK 01U



Recycled PET



- price
- size 4, 5, 6, 7, 8
- out sole CHUNKY SOLE
- material Upper: PU leather  
Outsole: rubber

VACAY CHUNKY is a new style that can be used in various scenes from vacation to city. The textured PU leather and gold metal parts creates a luxurious look. The back strap is removable and can be worn as a slide sandal as well. Available in 3 colors: black, brown, and linen.



BLACK 04R



ALL BLACK 00R NEW



ALL LINEN 00R NEW



ALL TAUPE 00R NEW



Recycled PET



- price
- size 4, 5, 6, 7, 8
- out sole CHUNCKY SOLE
- material Upper: polyester (recycle PET)  
Outsole: rubber

Based on SHAKA's popular style NEO BUNGY in a voluminous CHUNCKY SOLE version. One of the popular styles for women, it weighs lighter than it looks and is comfortable to wear for various occasions. With the sporty look of continued white midsole black color, new colors such as all black, all taupe, and all linen are added for a new and simple look.





BLACK 00R



SMOKE PURPLE 02R NEW



PEACH PINK 02R NEW

DAILY-URBAN

DAILY-URBAN



Recycled PET



- price
- size 4, 5, 6, 7, 8
- out sole CHUNKY SOLE
- material Upper: polyester (recycle PET)  
Outsole: rubber

A special model for women, This style is based on NEO RALLY without the ankle strap as a chunky slide sandal with a voluminous CHUNKY SOLE. Although it is a slide sandal, it is easy to wear as the 3 straps on the upper are adjustable for a great fitting. In addition classic all black, smoke purple, peach pink are added to the collection, and comes in black sole for a simple but fashionable look.

NEW STYLE



DAILY-URBAN



090



BLACK 00R



BROWN/BLACK 02R



PEACH PINK/BLACK 02R

- price
- size 4, 5, 6, 7, 8
- out sole HIKE PLATFORM SOLE
- material Upper: nylon  
Outsole: rubber

A classic sports sandal with glossy nylon strap and heel type HIKE PLATFORM to create feminine look. The back of the strap is attached with neoprene, making it comfortable to wear even with the thin straps. Available in 3 colors: all black, brown, and peach pink, comes with a black sole for a chic look.

DAILY-URBAN

091

NEW STYLE



BLACK 00R



MOSS GREEN/BLACK 03R



LINEN/BLACK 03R



Recycled PET



- price
- size 4, 5, 6, 7, 8
- out sole HIKE PLATFORM SOLE
- material Upper: polyester (recycle PET)  
Outsole: rubber

Introducing the new model CROSS HIKE PLATFORM, features a cross neoprene upper in HIKE sole. It comes with a metallic buckle for a highly fashionable look, but also functional and comfortable. The buckle can be adjusted for great fitting as well, making it even easy to wear. Available in 3 colors: black, moss green, and linen. Perfect to match with any look.



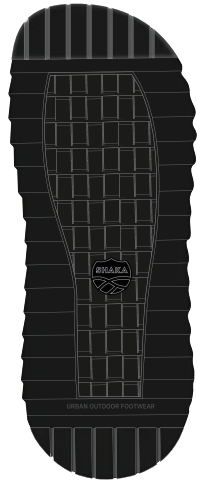
# ABOUT OUT SOLE



type :  
**EX SOLE**



EX SOLE is a new sole that pursues comfort for long hours wearing. Collaboratively developed with Italy's EXTRALIGHT, which also provides lightweight soles to the luxury fashion brands. It is about 25% lighter than the AT sole, and the uniquely developed EVA footbed improves cushioning and fitting, being the most comfortable sole in SHAKA history. It has excellent anti-slip with high grip, and can be worn it safely rainy days, perfect for urban lifestyle.



type :  
**EVA INJECTION COMFY SOLE**

The shark sole, which looks like a shark's tooth when viewed from the side, is manufactured using an integral injection molding method. The center uses a random shark tooth pattern with a fine pitch to enhance grip. A unique combination of materials provides comfortable cushioning that is neither too soft nor too hard that creates a perfect balance. The sole has excellent flexibility and is comfortable to wear.



type :  
**BAREFEET SOLE**

BF sole, named from BAREFEET gives the feeling of a bare feet experience as if you were grasping the ground with bare feet. Developed to be as thin as possible by inserting the midsole into the rubber cup-shaped outsole to feel like landing directly. It is one of the thinnest soles among SHAKA but also has a high-repulsion EVA midsole with high cushioning and a structure that provides long time comfort even when worn for a whole day.



type :  
**HIKE PLATFORM SOLE**

HIKE PLATFORM SOLE featuring an edgy shark tooth grip and platform sole. The separate toe and heel design provides long hours comfort when wearing even in platforms design. The rolling form design on the toe supports smooth walking. Details inspired by running shoes to provide perfect comfort.



type :  
**ALL-TERRAIN SOLE**

AT stands for ALL TERRAIN, it uses EVA injection on the sole for lightweight and great cushioning. The evolved version of shark tooth grip which is also the icon of SHAKA, has expanded pattern in the center of the bottom surface. Enabling the grip to approach in all directions in any environment and comfortable wearing for long hours.



type :  
**SAFARI SOLE**

SAFARI SOLE features block pattern that inspired by classic military "command boots" sole. SF sole, stands for SPECIAL FORCE, which aims for high quality that clears the "Special Forces" standards, and is lightweight and highly cushioned with the EVA injection method, combining together with rubber outsole for great grip.



type :  
**CHUNKY SOLE**

CHUNKY SOLE is the thickest and chunkiest sole among SHAKA. The thick EVA midsole has high cushioning and the curved arch provides long hours comfort while wearing. The rubber outsole has high grip for good comfort, fashionable yet easy-to-wear.



type :  
**ORIGINAL SOLE**

SHAKA's iconic original outsole that symbolizes SHAKA which has not changed since the beginning till this day. Details like shark tooth grip which looks like teeth of a shark features an excellent grip for all types of surfaces. The curved arch fits perfectly to support walking and the toe bumper also has a distinctive feature, and it is an icon that can be recognized as SHAKA at a glance.